

University of Michigan Survival Flight Clinical Guideline: A-1.1

Airway Management

Appropriate airway management is one of the main responsibilities of the medical transport team. It is usually best practice to intubate any patient that you believe may require intubation during transport prior to leaving the referring institution or scene.

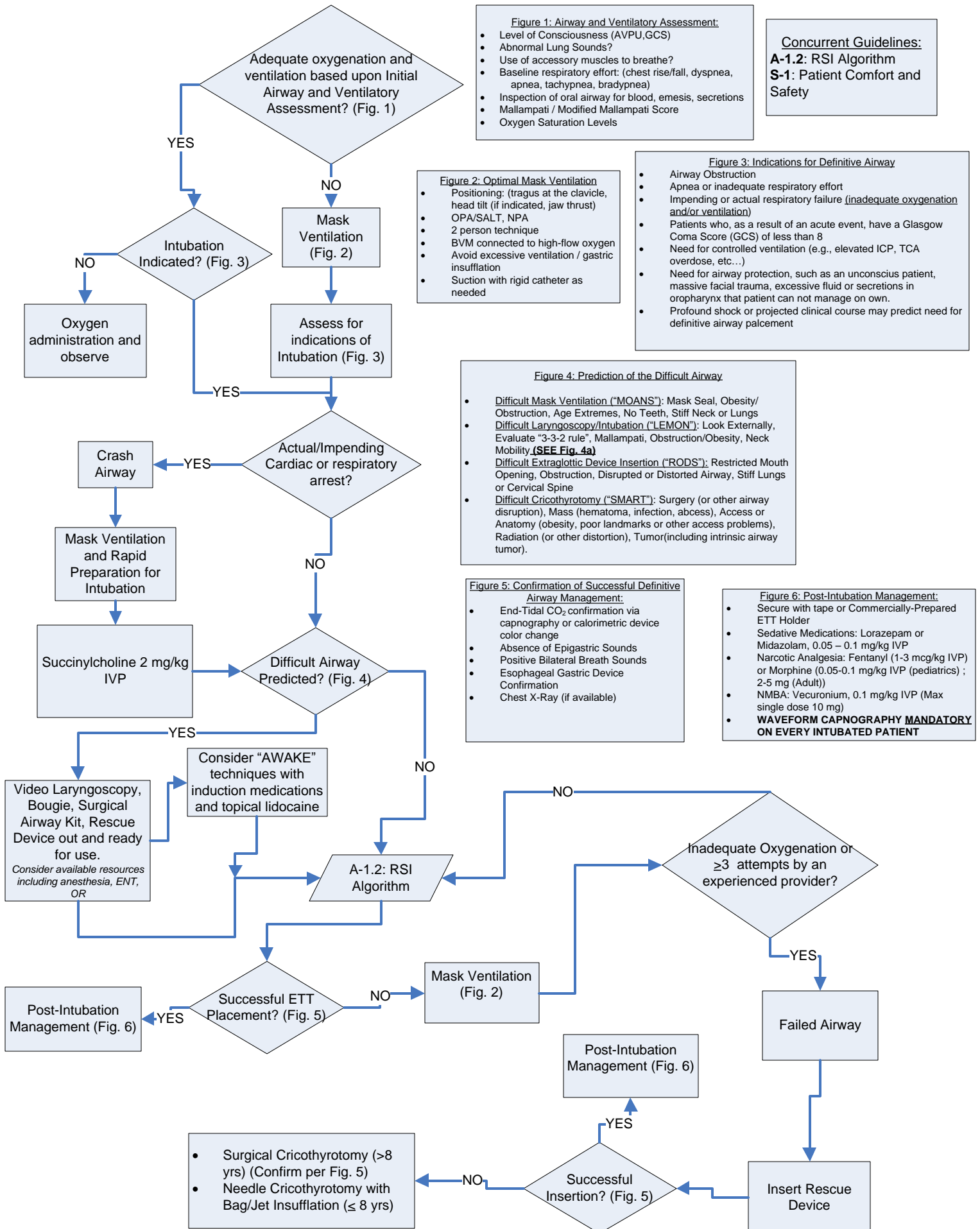
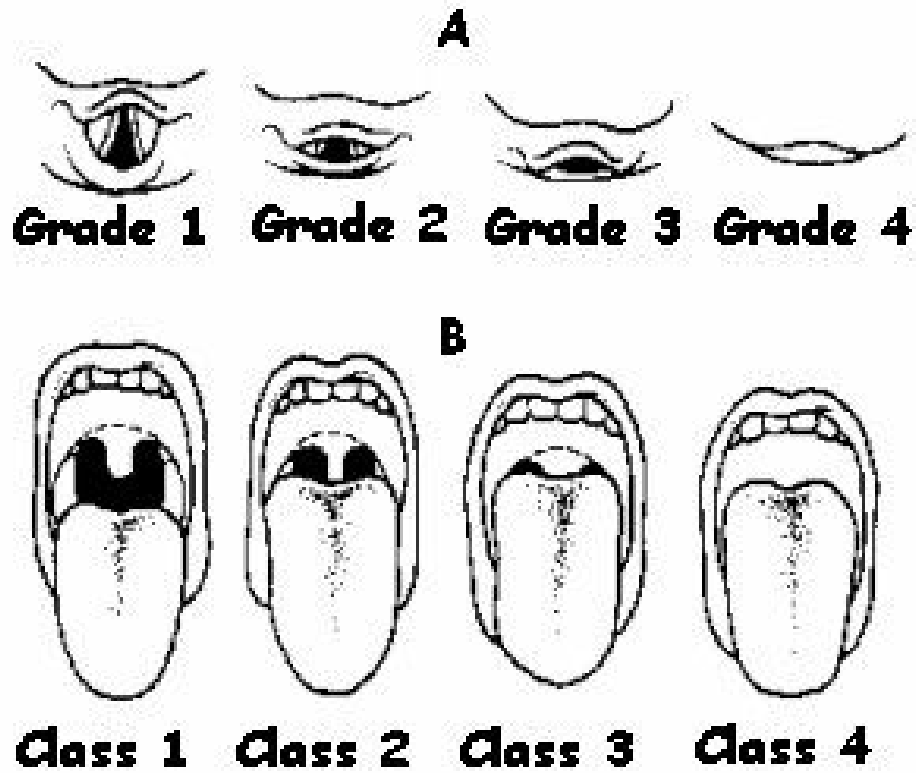
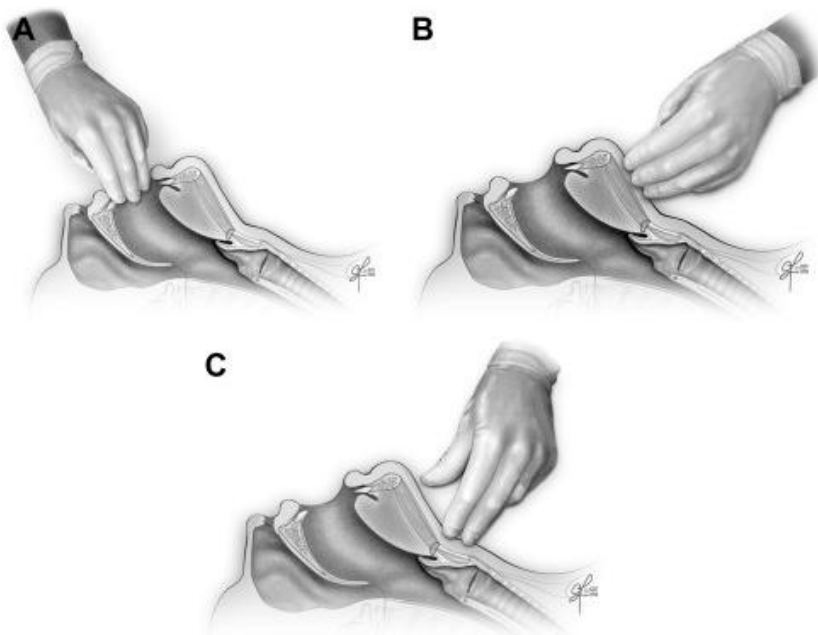


Fig. 4a: Airway Assessments



Cormack-Lehane Grades of Laryngoscopic View (top) and Mallampati Airway Assessment (bottom)

<http://www.anesthesioboist.blogspot.com>



3-3-2 Rule

Emerg. Med. Clin. N Am 26(4). 2008